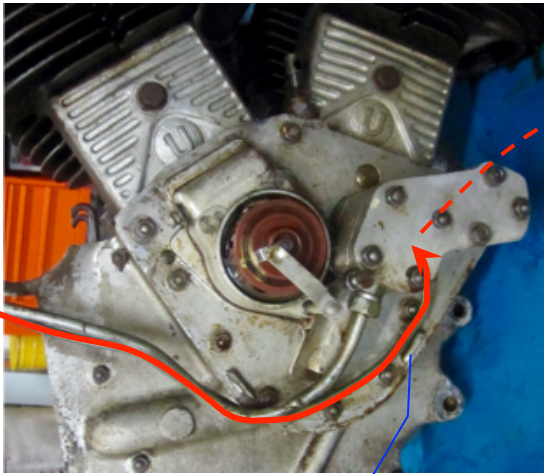
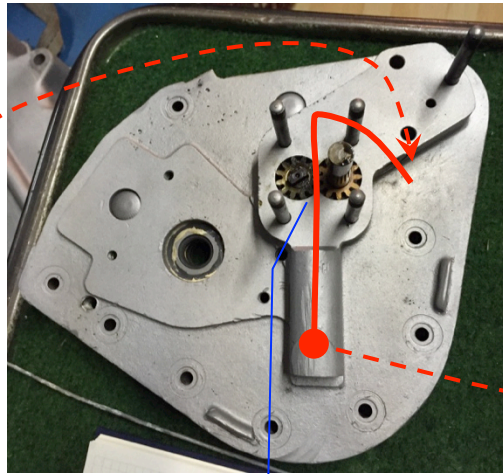


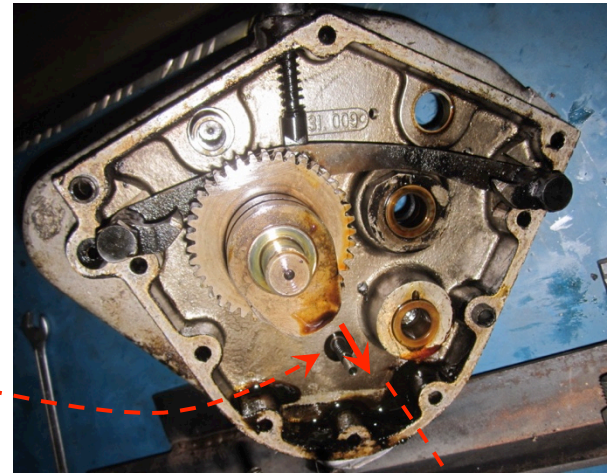
Universal A-1000 / Oelkreislauf – Versorgung ab Oeltank



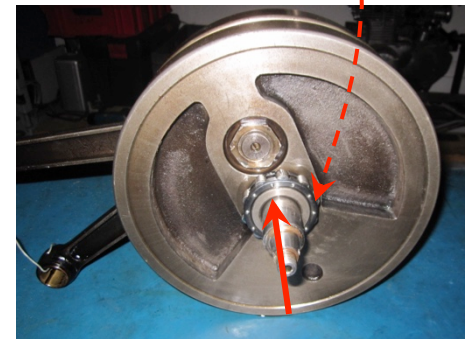
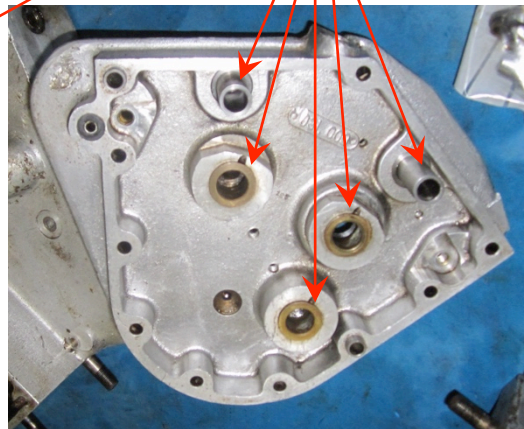
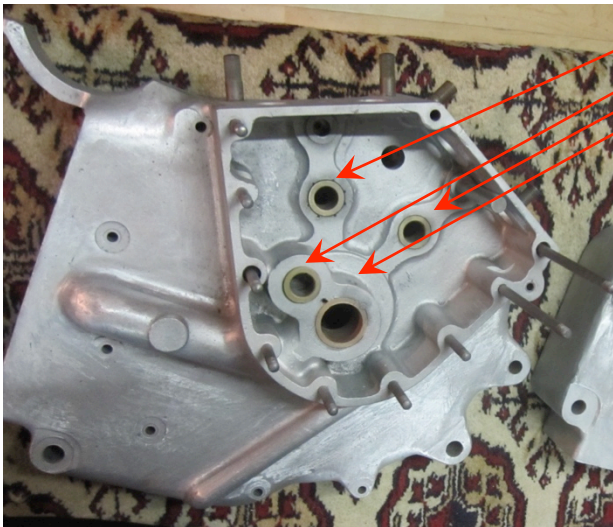
Vorlauf vom Oeltank



Vorlaufaufpumpe

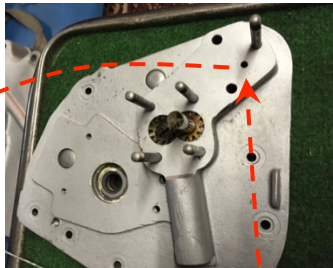
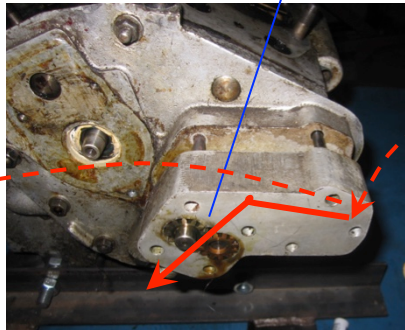
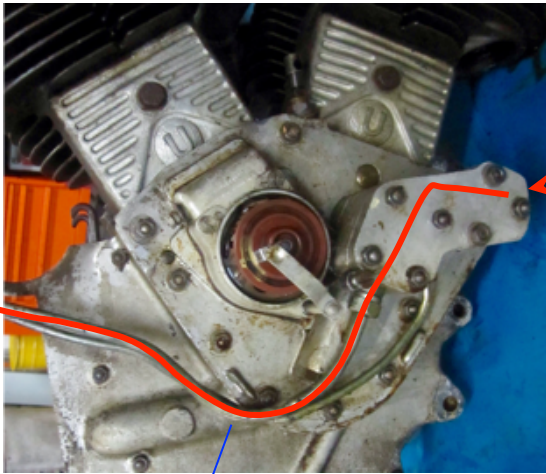


Schmierstellen durch Oeldampf

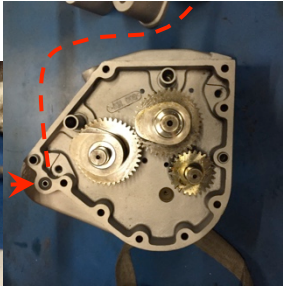
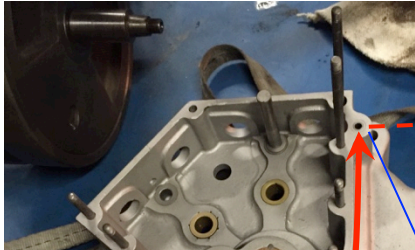


Universal A-1000 / Oelkreislauf – Rücklauf in den Oeltank

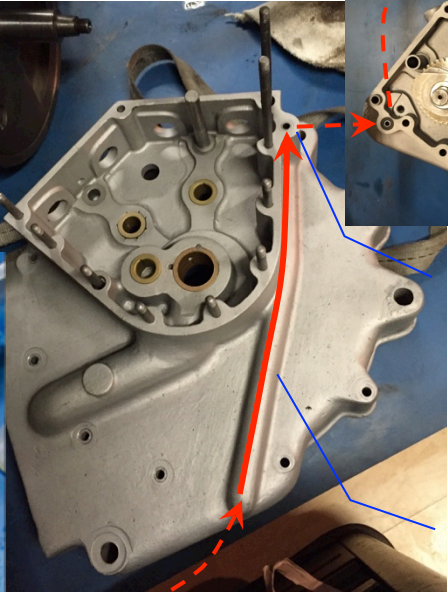
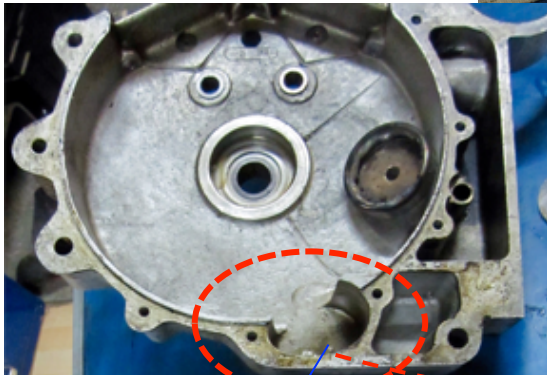
Rücklaufpumpe
Gekoppelt mit
Vorlaufpumpe



Rücklauf
zum Oel-
tank



Nockenkasten
mit Durchführ-
ungsdichtung



Oeltransport
zur Saugpumpe

Oelansaugmulde